



# CHIPPEWA/LUCE/MACKINAC CONSERVATION DISTRICT

2847 ASHMUN STREET  
SAULT STE. MARIE, MI 49783  
906-635-1278 WWW.CLMCD.ORG



@CHIPLUCEMACKCD



CHIPLUCEMACKCD

Summer 2023

*"Our Mission is to assist with land use and management through education, community projects and services."*

## 2023 Summer Update and Fall Tree/Bulb Sale Fundraiser

### District Update

It's been a hot summer in our neck of woods this year, but I was surprised to see that we didn't break any records. It has also been dry for most of us. Thankfully last year was a boom year for the local hay crop and hopefully that is helping our local farmers get by with a smaller yield this year. Even though it has been warm the Conservation District has been hitting the ground in all of Chippewa, Luce, and Mackinac County. A few projects of note this summer has been our Pennington Road Crossing in partnership with the Chippewa County Road Commission, our finish work on the Pickford Township Park Stormwater projects and our ever growing CISMA partnership.

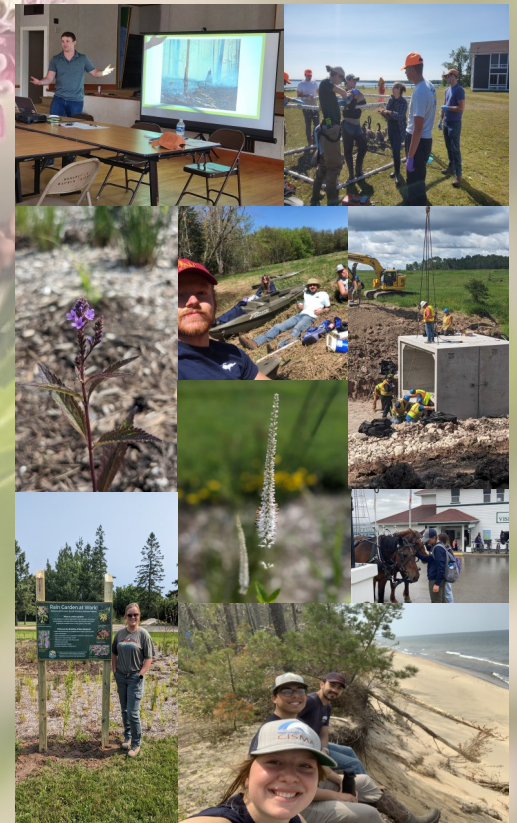
The Pennington Road Crossing located between M-48 and Gogomain Rd. was funded in part by our Munuscong River Watershed Conserving Our Waters Partnership Grant which funded \$225,000 of the project. Through our Partnership with the Chippewa County Road Commission we were able to leverage dollars to replace this crossing which had been repaired many times in the past and had out lived its lifespan. Between July 5th and July 30th the entire project was complete by the Road Commission and should have a lifespan between 50-70+ years.

This summer we are putting the finishing touches on the stormwater projects at the Pickford Township Park. Unfortunately, the ditch project needed additional attention due to the lack of drainage from the clay soils. In July nearly 300 ft. of the ditch was repaired with additional sand and top soil. In August mulch and replating with trees and native plants will take place. Additionally the rain gardens received additional flowering plants through a volunteer planting event held on July 25th along with an interpretive sign on the rain gardens function.

The Three Shores CISMA has been very busy with 6 seasonal staff working across the District on Garlic Mustard, Himalayan Balsam, Invasive Phragmites, European Frogbit, spotted knapweed, and Japanese Knotweed. We have been fortunate to be able to partner with the UP Resource Conservation & Development Council quite a bit this summer and have hosted their intern Josh for multiple days with the CISMA.

As always if we can be of any assistance or you have any concerns or questions please give us a call at 906-635-1278 or email at [clmcd@macd.org](mailto:clmcd@macd.org).

Sincerely,



### Forestry Assistance Program Update



The Forestry Assistance Program is running at full steam. Our forester, Louis Radecki, has visited over 7,000 acres offering technical assistance and guidance for those who wish to ensure that their properties remain healthy and diverse so that they can be enjoyed well into the future. He has also been hard at work informing landowners about programs they may qualify for that will help them achieve their management goals. Under the NRCS umbrella, The Environmental Quality Assistance Program (EQIP) has been popular among landowners interested in developing forest management plans and wildlife habitat improvement at little to no out-of-pocket cost. The NRCS has also, through the Regional Conservation Partnership Program (RCPP), partnered with the American Bird Conservancy to promote golden-winged warbler habitat by mulching ma-

ture stands of tag-alder in order to reset the natural succession. This popular practice both serves to promote habitat used by many bird species, including ruffed grouse and woodcock, but also has opened up many acres of property that were considered too thick and overgrown to properly access in the past. Far and away, the Qualified Forest Program attracts the most interest. This program promotes long term forest management through sustainable harvest practices by offering a tax incentive for following a forest management plan created by a qualified forester. This year our forester has enrolled over 2,000 acres into the program, helping landowners achieve diverse goals, such as timber production, wildlife habitat improvement, and recreational access, while simultaneously saving them money.

Forests are dynamic and ever-changing. They require different treatments depending on the species and soils present. If you are interested in learning more about ways to positively impact your woods, please reach out to our forester, Louis Radecki, at 906 632-9611 ext. 8055, or by email at [louis.radecki@macd.org](mailto:louis.radecki@macd.org)

## MAEAP Update



2023 has been an exciting year for MAEAP so far! After a long vacancy, we now have a new technician, Megan Bertucci. Megan started in March and has worked hard to prepare for the summer field season. Megan graduated from Northern Michigan University with a degree in ecology and has spent the last few years serving with the AmeriCorps program as an environmental educator. She enjoys using her education skills to provide landowners with technical assistance.

After starting in the spring, Megan focused on training and familiarizing herself with the MAEAP systems through various online and in-person training sessions. Once field season started, Megan started working towards getting producers reverified in their MAEAP systems. Because of the vacancy, there were a number of producers that had expired verifications and had been unable to reverify. Megan has been working through that list and will continue to work with those producers into the fall.

In August, Megan hosted our annual field day: Education on the Farm. This year, Michelle Sweeten from Michigan State University Extension discussed the importance of soil health and allowed producers to try their hands at sampling soil!

As fall approaches, Megan looks forward to continuing her progress on reverifying producers and hopes to verify some new producers as well. Megan also plans to attend online training with NRCS to build her skills!

If you are interested in learning more about MAEAP, please contact Megan via phone (906)632-9611 x 8053 or email at [megan.bertucci@macd.org](mailto:megan.bertucci@macd.org).

## NRCS/Engineering Update



The 2021 and 2022 construction season finalized a decade long wave of Wetland Reserve Program (WRP) enhancement installations. The WRP is a permanent easement program where the proposed land is placed into an ownership trust with the landowner and the U.S.

Government, restricting land usage to quiet enjoyment and some hunting and fishing activities for the landowners. In return, NRCS designs and oversees installation of enhancement activities on the land to return the land back to pre-settlement conditions. These enhancements can include ditch plugging for existing surface water drainage ditches, shallow water wildlife habitat pushouts, and cross furrow plowing. The intent of these structures is not to develop deep and clear fishing ponds for stocking, but rather to hold more water on the property which in turn will encourage wetland vegetation and wildlife. Shallow impounded areas are ideal habitat for frogs, snakes, beetles, ducks, geese and will also attract deer and other large mammals. If you keep an eye out as you drive around the Eastern Upper Peninsula, you may see a few of these wetlands growing up within the many retired hay fields. One giveaway is the small white wetland easement marking signs, on t-posts, which are placed around the easement. These are still privately owned through a trust with the government and the landowner, so they are not public lands available to the average Yooper.

Fall 2022 ushered in some changes to the Chippewa Luce Mackinac Conservation District and the Natural Resources Conservation District (NRCS) Sault Ste. Marie Field Office as District Conservationist (DC) Madeleine Cantu accepted an outreach coordinator position at the NRCS Michigan state office in East Lansing. NRCS assembled a hiring committee and after posting the DC position availability, and sorting through many qualified candidates, they elected to hire Pat Carr, who was the Soil Conservationist here in the Sault Ste. Marie field office. Pat's promotion left his role vacant. NRCS posted the Soil Conservationist, interviews took place, and candidates are currently being considered.

Feel free to stop by 2847 Ashmun St. or call NRCS at 906-253-8062 with any conservation or wildlife related questions.



## \$ MAEAP Cost Share \$

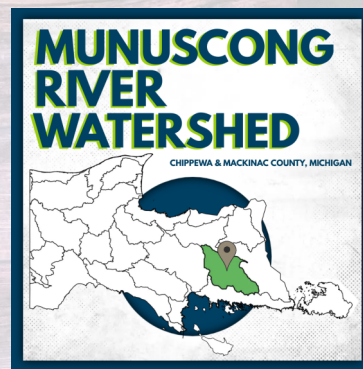


MAEAP Cost-Share dollars are always available for producers engaged with MAEAP to support landowners as they work their way towards Verification in Farmstead, Cropping, Livestock and Forest, Wetlands, and Habitat Systems. These monies can be used for a variety of practices including soil samples, water samples, fueling pads, gutters, manure management, forestry management plans, and backflow protection. Any simple or complex project to reduce pollution and erosion.

## EUP Watersheds Update

Work within the Munuscong River Watershed continued during the 2023 field season. Starting in May, Watershed Technician Jacob Hartman and Watersheds Intern Madison Jordan began planting trees within the watershed. In total 2,800 trees were planted on 4 different sites in less than a week. This was in addition to the 5,600 trees that were planted last spring. 10 different species were planted in riparian zones and heavily disturbed areas to restore wildlife habitat and reduce non-point source pollution. More plantings occurred later in the summer at the Pickford Township Park, where several rain gardens were constructed last fall. Close to 400 individual plugs were planted to add more flowering species to the rain gardens. These rain gardens will capture water that runs off from impermeable surfaces, like concrete and asphalt, and filter them before the water reaches the Munuscong. They also provide lots of diverse pollinator habitat. In addition to these plantings, CLMCD has continued its efforts installing best management practices on agricultural sites within the watershed. 4,000 feet of exclusion fencing was installed along the East Branch of the Munuscong River. Another site that involves approximately 3,000 feet of exclusion and interior fencing, 300 feet of barn gutters, a winter watering facility, and a heavy use area pad. These projects will reduce the amount of E. coli and nutrients entering the Munuscong River Watershed. A large part of this project is monitoring E. coli levels at each site to determine difference before and after practice implementation. CLMCD is still actively looking for new participants for this grant funded project.

The watersheds program also made appearances at public events such as the Sault Farmers Market, Frog Fest, Pendills Creek Kids Fishing Day, and Pickford Hay Days to educate the public about the basics of watershed management. As always, CLMCD is looking to expand its work to other watersheds, such as the Waishkey River and Charlotte River watersheds and will continue to pursue grants to improve these watersheds. If you are interested in learning more or participating in our watersheds program contact Jacob Hartman at 906-748-0837 or [jacob.hartman@macd.org](mailto:jacob.hartman@macd.org).





# 2023 FALL TREE/BULB FUNDRAISER



## Plugs/Containerized Tree Seedlings

Species:	25 Trees	50 Trees	100 Trees	500 Trees
Jack Pine	\$22	\$38	\$65	\$270
Red Pine	\$24	\$42	\$73	\$310
White Pine	\$22	\$38	\$65	\$270
Balsam Fir	\$23	\$40	\$67	\$280
Black Spruce	\$22	\$38	\$65	\$270
Norway Spruce	\$22	\$38	\$65	\$270
White Spruce	\$22	\$38	\$65	\$270
Tamarack	\$23	\$40	\$67	\$280
White Cedar	\$23	\$40	\$67	\$280
Yellow Birch	\$23	\$40	\$67	\$280
White Birch	\$23	\$40	\$67	\$280

**ORDER ONLINE @ [www.clmcd.org](http://www.clmcd.org)**

### Fall Perennial Bulbs & Roots

Perennial Flower Bulbs come as single bulbs packaged in the sale quantity by CLMCD. Color mix can not be guaranteed. All bulbs are rated for USDA Hardiness Zone 3 or 4. Planting requirements vary for each species/variety. Plantings should occur in garden settings easy to manage.

### Tulip Bulbs

Species	Color (s)	5 Bulbs	10 Bulbs	15 Bulbs	20 Bulbs	-
Grand Darwin	Pink, yellow, red	\$10	\$20	\$30	\$40	-
Pink Mix	Shades of Pink	\$10	\$20	\$30	\$40	-
Purple Passion	Purple, White	\$10	\$20	\$30	\$40	-
Parrot Tulip fringed Mix	Pink, red, purple, yellow	\$10	\$20	\$30	\$40	-
Late Color Mix <i>Blooms later</i>	Pink, Red, Purple, White, Yellow	\$10	\$20	\$30	\$40	-

### Daffodil Bulbs

Species	Color (s)	1 Bulb	5 Bulbs	10 Bulbs	15 Bulbs	20 Bulbs
Trumpet Mix	Yellow, White, Peach	-	\$11	\$22	\$33	\$44
Dutch Master	Yellow	\$6	\$11	\$22	\$33	\$44
Pink Charm	White, Peach	\$6	\$11	\$22	\$33	\$44
All in one Mix	White, Yellow, Peach	-	\$11	\$22	\$33	\$44

### Dutch Iris Bulbs

Species	Color (s)	1 Bulb	5 Bulbs	10 Bulbs	15 Bulbs	20 Bulbs
Dutch Iris Mix	Yellow, White, Purple, Blue	-	\$10	\$20	\$30	\$40
Dark Blue Mix	Blue	\$6	\$10	\$20	\$30	\$40
Deer Resistant Mix	Blue, Yellow, Lavender	-	\$10	\$20	\$30	\$40

### Bearded Iris Roots

Species	Color (s)	1 Root	3 Roots	5 roots	-	-
Spendthrift	Purple, Peach	\$16	\$48	\$80	-	-
Seaward	Blue, Purple	\$16	\$48	\$80	-	-
Autumn Rose	Pink	\$16	\$48	\$80	-	-
On Deck	White, Blue	\$16	\$48	\$80	-	-

### Allium Bulbs

Species	Color (s)	1 Bulb	5 Bulbs	10 Bulbs	15 Bulbs	20 Bulbs
Blue Allium	Blue	\$5	\$10	\$20	\$25	\$30
Purple Sensation	Purple	\$5	\$10	\$20	\$25	\$30
Globemaster	Purple	\$14	\$70	-	-	-
Mount Everest	White	\$14	\$70	-	-	-

Can't order online? Want to pay by Check?  
Need a paper order form?

Contact CLMCD for a paper form!  
Phone: 906-635-1278 - Email: [clmcd@macd.org](mailto:clmcd@macd.org)

Online Orders are preferred!  
Order at: [www.clmcd.org](http://www.clmcd.org)

**\*ORDERS DUE\***  
**Wednesday**  
**September 27th, 2023**

## ORDER PICK UP

Sault Ste. Marie ONLY

**Thursday, October 12th, 2023**

**2:00 PM - 6:00 PM**

**Friday, October 13th, 2023**

**8:00 AM—12:00 PM (Noon)**

2847 Ashmun Street Sault Ste. Marie, 49783



CHIPPEWA/LUCE/MACKINAC  
 CONSERVATION DISTRICT  
 2847 ASHMUN STREET  
 SAULT STE. MARIE, MI 49783

NON-PROFIT  
 ORGANIZATION  
 U.S. POSTAGE  
 PAID  
 PERMIT NO. 330

**Fall Tree/Bulb Fundraiser  
 Info. Enclosed**



## Three Shores Cisma Update



As the warm rays of summer blanket the shores of our Great Lakes, we are delighted to gather once again and provide updates on the relentless efforts of our Cisma partnership in combating invasive species throughout the region. Through seven currently active grants, the Three Shores Cisma employed seven staff members, including a full-time Cisma coordinator Michael Hindy, seasonal team leaders Alec Connell, Lizzy Brushaber, Nate Veres, and seasonal team members Joanne Arbic, Lillian Lacross, and Judson Fargo. Since our seasonal team started in Mid-May, over 5,400 lbs of garlic mustard, European frog-bit, and Himalayan balsam were hand-pulled from various locations amongst Chippewa, Luce, and Mackinaw counties. In addition to our manual removal efforts, over 100 acres of invasive species were treated using alternative methods, and early detection survey efforts for high-priority and rare invasive species occurred across 7,200 acres in the region.

Want to help support our efforts? Well, just like Uncle Sam says, "We want you!" Whether it be through attending educational workshops, participating in citizen science reporting of invasive species, or volunteering at one of our events, we appreciate all who participate in our resilient network of guardians standing unified against invasive species that threaten the ecological harmony of the Eastern Upper Peninsula. Thank you for being an essential part of the Three Shores Cisma! To get involved contact Michael Hindy at 906-630-7139 or [Michael.hindy@macd.org](mailto:Michael.hindy@macd.org).

